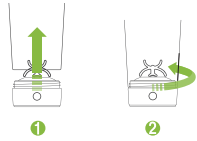


Instruction Manual

● INSTALLATION



1



2

● REMOVAL



1



2

(To avoid injury to your hands, please do not touch the button during assembly.)

● USE STEPS



1 Add liquid



2 Add protein powder and other powders



3 Click the button
(one click: work for 30 seconds, double click: work for 3 minutes)

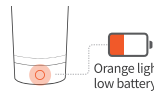


4 Drink smooth milkshake

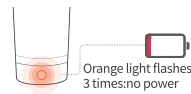
● POWER DISPLAY



Click the button



Orange light low battery



Orange light flashes 3 times: no power

(Fully charged in about two hours)
To preserve battery life, charge the battery when the light is orange

● CLEANING METHOD



1 Add warm water and dish soap



2 Click the button to start



3 Pour off water and rinse



4 Clean the lid

● CLEANING METHOD

Dishwasher washing



Remove the base



Put the cup and lid upside down in the dishwasher



Start the dishwasher



Take out the bottle and lid

● IN THE BOX



Electric Shaker Bottle



Button



Charging Port



Charging Cable

● IMPORTANT

Dear customer
Thank you for choosing VOLTRX®.

Scanning the QR code to register as our member and enjoying the member benefits:



Video product instructions.



Extend warranty to 18 months.



Opportunities to experience new products for free.



Get product coupons at every festival.



VIP customer service.

● AFTER SALE

If you have any insoluble problems, please feel free to contact us, and you will feel 100% satisfaction.

● Return goods

● Exchange goods

● Repair

voltrx.com

support@voltrx.com

business.voltrx.com

And more...

VOLTRX



User Manual

● IMPORTANT NOTES

Usage Safety

- To avoid damage and injury, please never pour water above 160 degrees Fahrenheit into the bottle. Too high temperature will cause pressure accumulation during operation, and may break the sealing, to gush from the top.
- Please never heat the bottle in high temperature environment such as microwave oven and sterilization cabinet. Please never freeze this product.
- Do not add dry ice, carbonated beverage and other liquids prone to generate high pressure. Do not add strong acid or alkali so as to prevent inner wall of container from corrosion.
- Do not store dairy product or baby food in the bottle for a long time.
- Do not entirely soak the base in liquid for a long time to avoid failures

Battery and Charging

- Battery life mainly depends on your usage frequency. The statement of charge once for 2month is calculated based on using once a day under 30 sec mixing mode. Battery performance will gradually decline with the time of use.
- When charging, LED indicator light will flash at current battery level, and all indicator lights are off after full charging.

● TROUBLESHOOTING

- Unable to start mixing
- No battery (Orange light flashes 3 times) please charge
- The base and bottle cannot be assembled
- Foreign matter in the notch Incorrect notch position
- Mixing power is weak or mixing stops suddenly
- Low battery (Orange LED)
- Excessive protein powder (More than 80 grams of powder will have poor stirring effect)
- Improper base installation Hard block preventing the agitator from rotating

